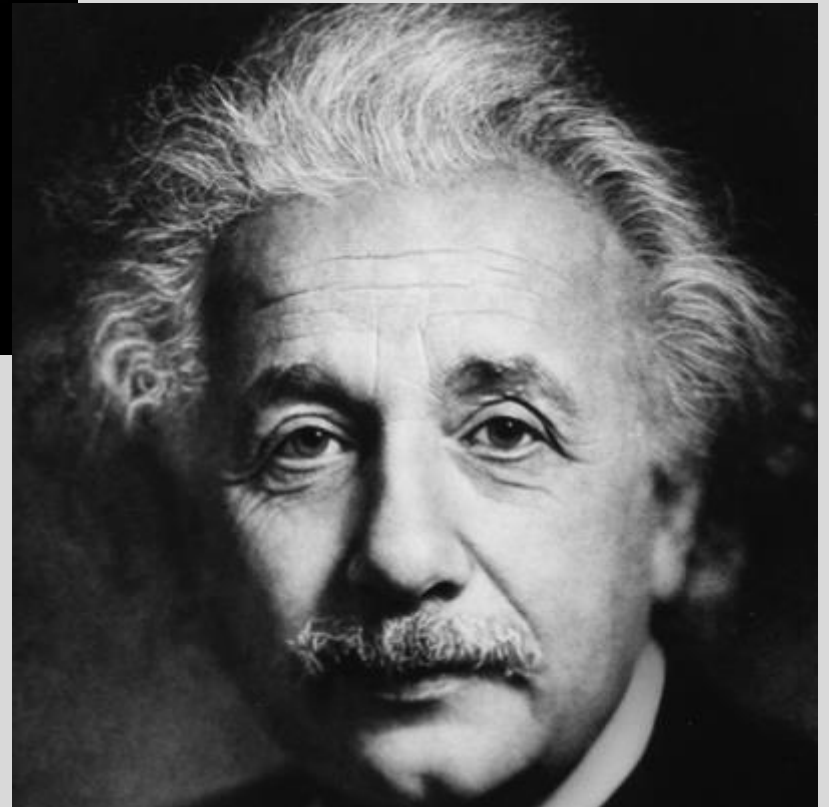
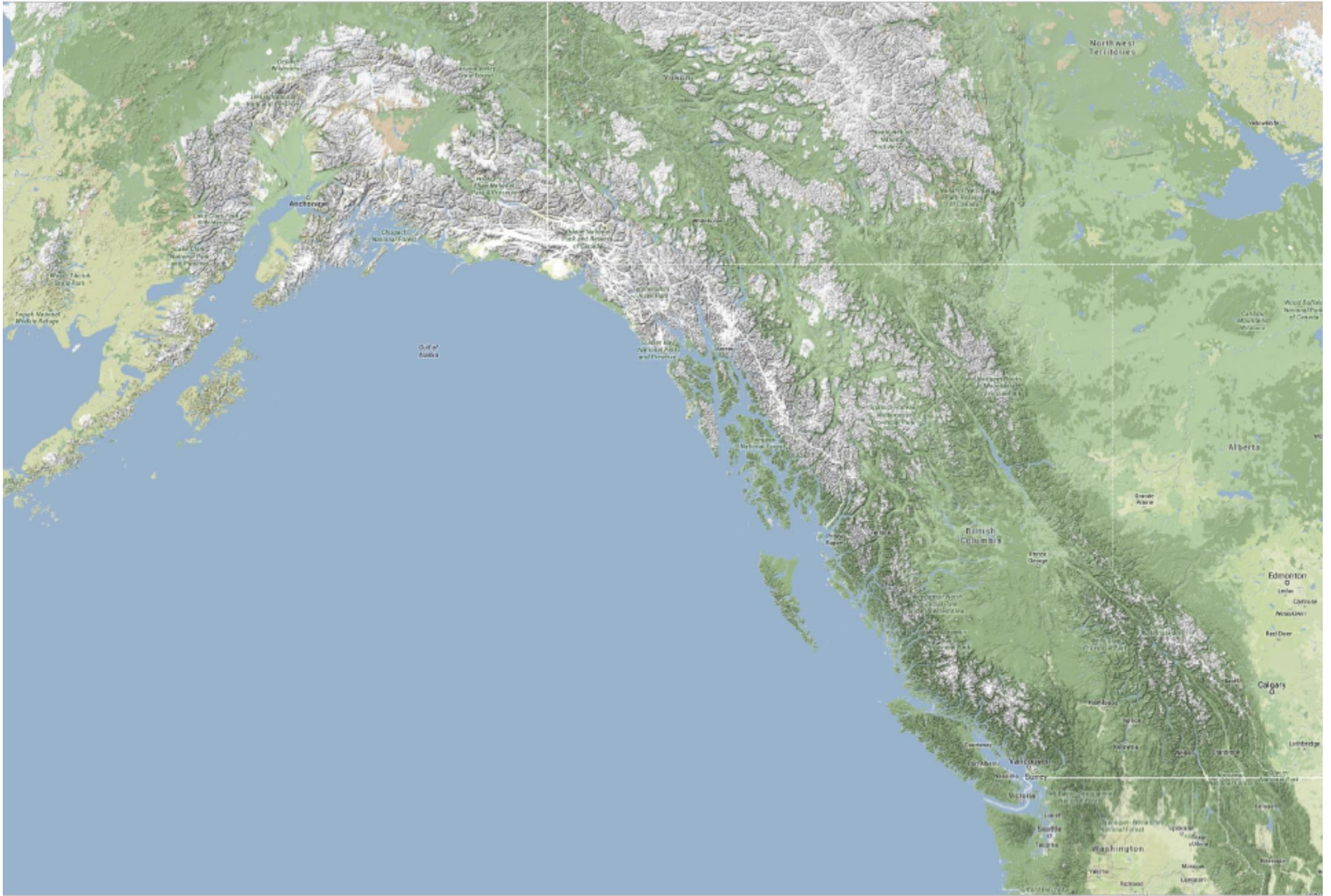


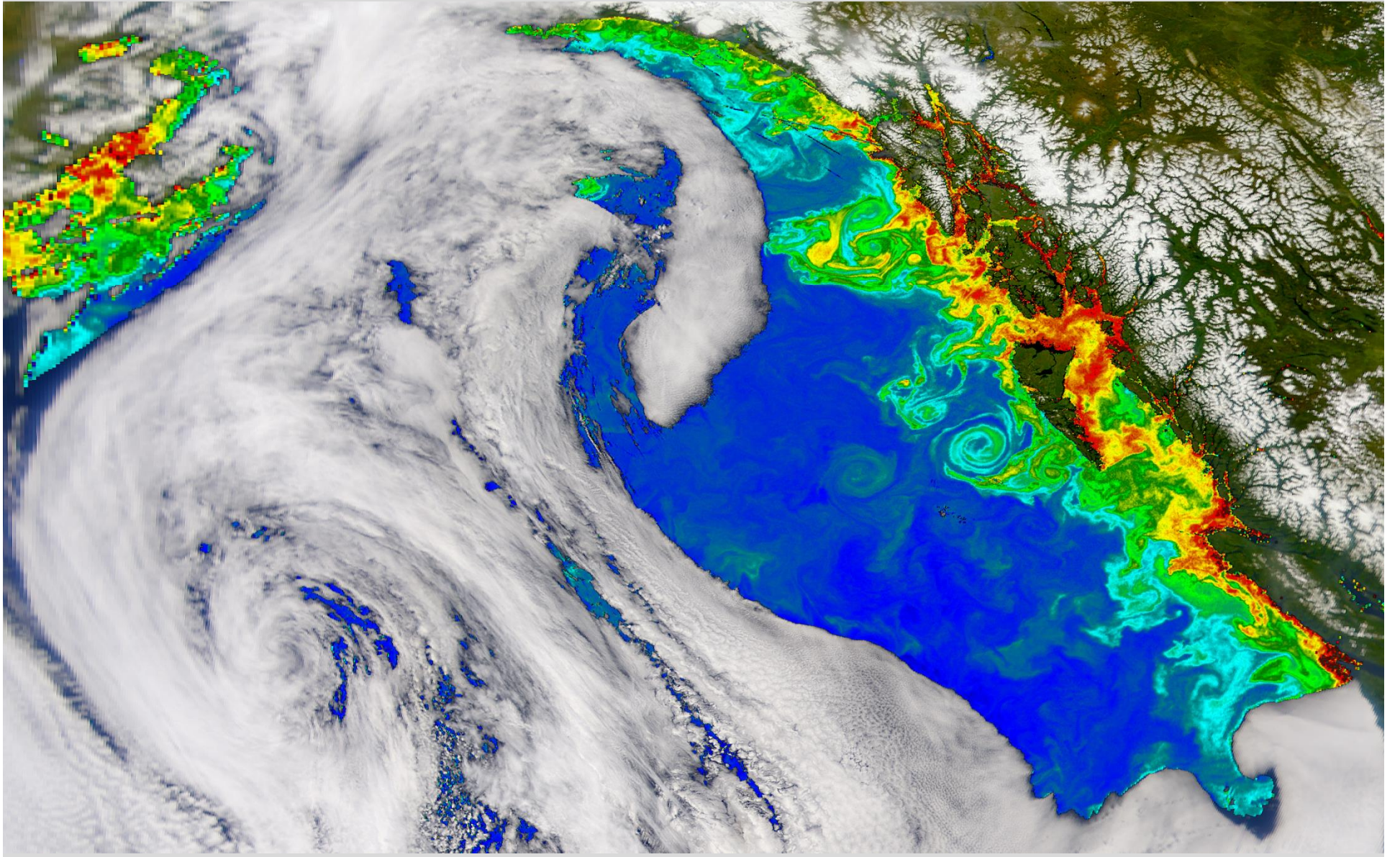
Research & Development Cluster

Southeast Cluster Initiative

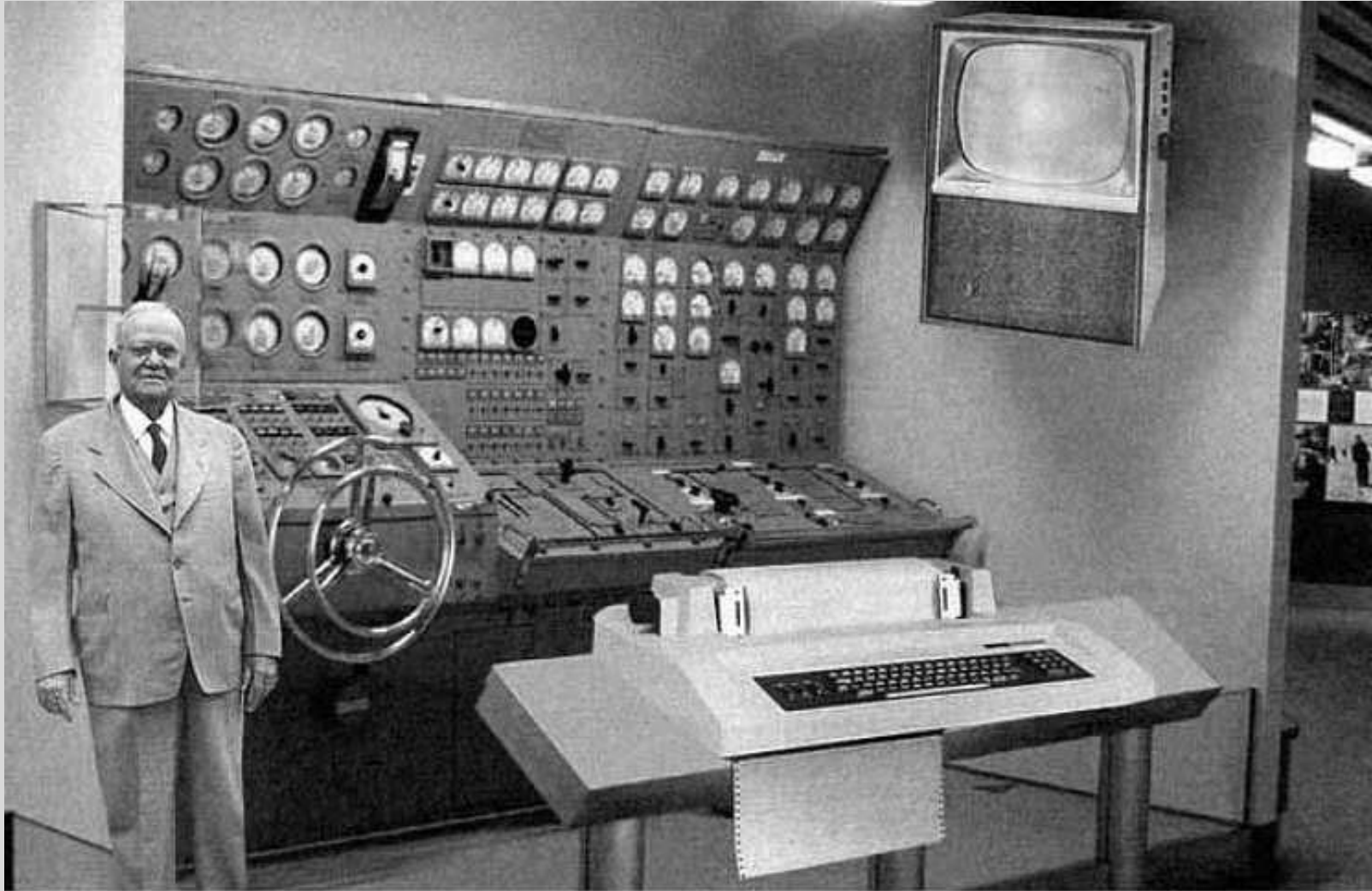
Juneau Economic Development Council







Model of the 2004 'home computer' from 1954



Scientists from the RAND Corporation have created this model to illustrate how a "home computer" could look like in the year 2004. However the needed technology will not be economically feasible for the average home. Also the scientists readily admit that the computer will require not yet invented technology to actually work, but 50 years from now scientific progress is expected to solve these problems. With teletype interface and the Fortran language, the computer will be easy to use.





Science and Engineering State Profiles

Characteristic	Alaska		United States
	value	rank	
All Employed SEH doctorates, 2010	1,400 ¹	50	690,400
S&E doctorates awarded, 2011	37	52	34,146
SEH postdoctorates in doctorate-granting institutions, 2010	44	51	63,305
SEH graduate students in doctorate-granting institutions, 2010	882	50	575,785
Federal spending			
Total expenditures, 2010 (\$millions)	12,615		443,250,500

Source: <http://www.nsf.gov/statistics/states/show.cfm?stateID=53,2&year=0>

Total R&D performance, 2008 (\$millions)	269	49	372,661
SBIR awards, 2010	1	52	7,089
Utility patents issued to state residents, 2011	27	51	108,623

Federal obligations for research and development, by agency and performer,
2010 (Thousands of dollars)

	235,56		137,934,0
All agencies	2	43	71
Department of the Interior	55,837	2	711,630

Source: <http://www.nsf.gov/statistics/states/show.cfm?stateID=53,2&year=0>



R&D



DEVELOP A COLLABORATIVE RESEARCH NETWORK FOCUSED ON
KEY THEMES IN SOUTHEAST ALASKA

LINK INDUSTRY NEEDS TO LOCAL RESEARCHERS IN SOUTHEAST ALASKA

CONNECT RESEARCH TO COMMUNITIES

MARKET THE UNIQUE GEOGRAPHIC , NATURAL AND INFRASTRUCTURE FEATURES OF
OUR REGION

PROMOTE STEM EDUCATION IN OUR REGION

BECOME A SCOR (STATE COMMITTEE ON RESEARCH) AREA OF EXCELLENCE



R&D



DEVELOP A COLLABORATIVE RESEARCH NETWORK FOCUSED ON KEY THEMES IN SOUTHEAST ALASKA

LINK INDUSTRY NEEDS TO LOCAL RESEARCHERS IN SOUTHEAST ALASKA

CONNECT RESEARCH TO COMMUNITIES

MARKET THE UNIQUE GEOGRAPHIC , NATURAL AND INFRASTRUCTURE FEATURES OF OUR REGION

PROMOTE STEM EDUCATION IN OUR REGION

BECOME A SCOR (STATE COMMITTEE ON RESEARCH) AREA OF EXCELLENCE

Initiative Goals:

- “ Improve regional communication and coordination regarding R&D opportunities and needs in SE AK
 1. Establish discussion group seminars
 2. Create innovative pilot activities
 3. Implement a field exchange program
 4. Information sharing



R&D



DEVELOP A COLLABORATIVE RESEARCH NETWORK FOCUSED ON
KEY THEMES IN SOUTHEAST ALASKA

LINK INDUSTRY NEEDS TO LOCAL RESEARCHERS IN SOUTHEAST ALASKA

CONNECT RESEARCH TO COMMUNITIES

MARKET THE UNIQUE GEOGRAPHIC , NATURAL AND INFRASTRUCTURE FEATURES OF
OUR REGION

PROMOTE STEM EDUCATION IN OUR REGION

BECOME A SCOR (STATE COMMITTEE ON RESEARCH) AREA OF EXCELLENCE

Initiative Goals:

- “ Connect local research community to industry stakeholder needs
- “ Bring new funding sources for R&D into the region
- “ Liaise with other Industry clusters



R&D



DEVELOP A COLLABORATIVE RESEARCH NETWORK FOCUSED ON
KEY THEMES IN SOUTHEAST ALASKA

LINK INDUSTRY NEEDS TO LOCAL RESEARCHERS IN SOUTHEAST ALASKA

CONNECT RESEARCH TO COMMUNITIES

MARKET THE UNIQUE GEOGRAPHIC , NATURAL AND INFRASTRUCTURE FEATURES OF
OUR REGION

PROMOTE STEM EDUCATION IN OUR REGION

BECOME A SCOR (STATE COMMITTEE ON RESEARCH) AREA OF EXCELLENCE

Improve regional communication and coordination regarding R&D opportunities and needs in SE AK

Develop communication mechanism between rural SE AK communities and R&D establishments

Developed and currently implementing survey of research needs of rural communities in Southeast AK

Rural community leaders encouraged to take survey

[Surveymonkey.com/s/Connecting_Research_To_Communities](https://www.surveymonkey.com/s/Connecting_Research_To_Communities)



R&D



DEVELOP A COLLABORATIVE RESEARCH NETWORK FOCUSED ON
KEY THEMES IN SOUTHEAST ALASKA

LINK INDUSTRY NEEDS TO LOCAL RESEARCHERS IN SOUTHEAST ALASKA

CONNECT RESEARCH TO COMMUNITIES

MARKET THE UNIQUE GEOGRAPHIC , NATURAL AND INFRASTRUCTURE FEATURES OF
OUR REGION

PROMOTE STEM EDUCATION IN OUR REGION

BECOME A SCOR (STATE COMMITTEE ON RESEARCH) AREA OF EXCELLENCE

Initiative Goals:

- “ Strengthen relationships within the existing regional network of research facilities in Southeast Alaska
- “ Elevate network visibility and profiles
- “ Make improvements in local infrastructure
- “ Adopt institutional practices that allow sharing of facilities and logistics support
- “ 2013 Activities
 - . Developed preliminary database of R&D infrastructure in SE AK
 - . Liaised with local media to increase publication of research activities happening throughout SE AK
- “ 2014 Goals
 - . Market SE AK R&D Community to entities outside of Alaska.



R&D



DEVELOP A COLLABORATIVE RESEARCH NETWORK FOCUSED ON
KEY THEMES IN SOUTHEAST ALASKA

LINK INDUSTRY NEEDS TO LOCAL RESEARCHERS IN SOUTHEAST ALASKA

CONNECT RESEARCH TO COMMUNITIES

MARKET THE UNIQUE GEOGRAPHIC , NATURAL AND INFRASTRUCTURE FEATURES OF
OUR REGION

PROMOTE STEM EDUCATION IN OUR REGION

BECOME A SCOR (STATE COMMITTEE ON RESEARCH) AREA OF EXCELLENCE

Initiative Goals:

- “ Advocate for STEM education in and out of the classroom
- “ Match up need for STEM education with typical employment mandates for community service amongst STEM research scientists.
- “ Align R&D community with JEDC STEM AK Programming



R&D



DEVELOP A COLLABORATIVE RESEARCH NETWORK FOCUSED ON
KEY THEMES IN SOUTHEAST ALASKA

LINK INDUSTRY NEEDS TO LOCAL RESEARCHERS IN SOUTHEAST ALASKA

CONNECT RESEARCH TO COMMUNITIES

MARKET THE UNIQUE GEOGRAPHIC , NATURAL AND INFRASTRUCTURE FEATURES OF
OUR REGION

PROMOTE STEM EDUCATION IN OUR REGION

BECOME A SCOR (STATE COMMITTEE ON RESEARCH) AREA OF EXCELLENCE

Initiative Goals:

- “ Establish Southeast Alaska as a regional area of R&D excellence.
- “ Establish R&D cluster as a recognizable entity to formally act as vehicle for achieving the aims of the SCoR plan in Southeast.
- “ Seeking feedback from SCoR committee

Goals

- “ Regional identification with RD Cluster
- “ Business involvement in R&D with grant support
- “ Interagency collaboration throughout the region
- “ Increase R&D income from funding sources

